

Property Description

Two-bedroom Retirement Apartment!! Located in this beautiful block and decorated to a good standard throughout. The block itself offers communal sitting area, utility room, block managers and lovely communal gardens. The apartment is located on the first floor. Internally it offers large hall, lounge with Juliette balcony & separate kitchen, two bedrooms both with fitted wardrobes, modern shower room with a walk-in shower.

Hallway

Living Room – 17'01" x 10'00"

Kitchen – 7'01" x 5'08"

Bedroom One – 13'02" x 10'02"

Bedroom Two – 9'00" x 13'03"

Shower Room – 10'01" x 6'10"

Storage Cupboards

Disclaimer: Information provided about this property does not constitute or form part of an offer or contract, nor may it be regarded as representations. All interested parties must verify accuracy and your solicitor must verify tenure/lease information, fixtures & fittings and, where the property has been extended/converted, planning/building regulation consents. All dimensions are approximate and quoted for guidance only as are floor plans which are not to scale and their accuracy cannot be confirmed. Reference to appliances and/or services does not imply that they are necessarily in working order or fit for the purpose.

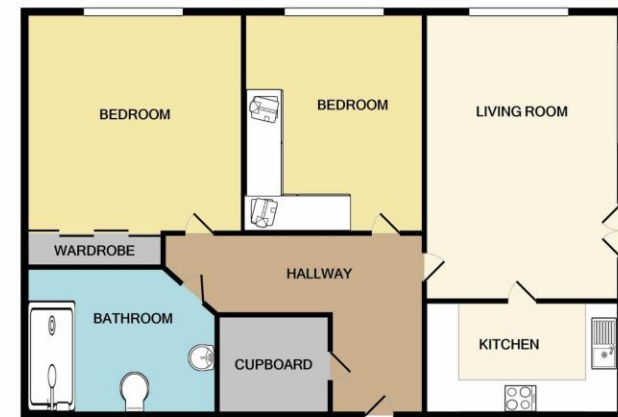
"Our Service is Key"

**2 Bedroom
Apartment**

Offers In Excess Of £270,000

Tythe Court, White Hart Lane, Romford, RM7 8LZ





Whilst every attempt has been made to ensure the accuracy of the floor plan contained here, measurements of doors, windows, rooms and any other items are approximate and no responsibility is taken for any error, omission, or mis-statement. This plan is for illustrative purposes only and should be used as such by any prospective purchaser. The services, systems and appliances shown have not been tested and no guarantee as to their operability or efficiency can be given.
Made with Metropix 12/2021