

Property Description

Guide Price: £230,000 - £240,000 - Ideally located in close proximity to local shops as well as excellent public transport links. This two-bedroom top floor flat is decorated to an excellent standard throughout, offering large double bedroom, modern living space, separate kitchen as well as second double bedrooms and a family bathroom. The property is also in an excellent spot for strong links to M25. There is allocated parking for one car as well as ample visitor parking spaces.

Ideally located in close proximity to local shops as well as excellent public transport links. This two-bedroom top floor flat is decorated to an excellent standard throughout, offering large double bedroom, modern living space, separate kitchen as well as second double bedrooms and a family bathroom. The property is also in an excellent spot for strong links to M25. There is allocated parking for one car as well as ample visitor parking spaces.

Hallway

Living Room – 12'02" x 18'01"

Bedroom One – 11'02" x 10'01"

Bedroom Two – 9'08" x 10'02"

Bathroom – 6'02" x 5'08"

Kitchen – 5'01" x 8'09"

Top Floor

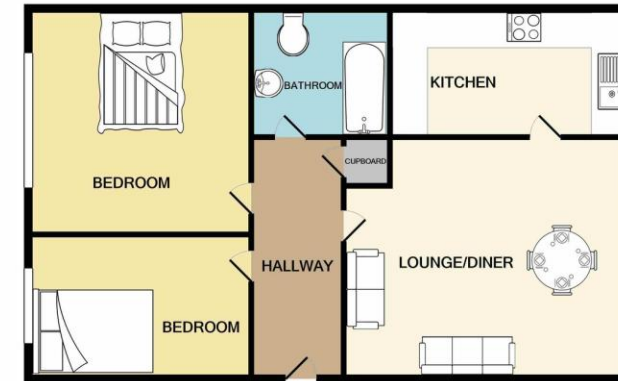
Parking Space Disclaimer: Information provided about this property does not constitute or form part of an offer or contract, nor may be it be regarded as representations. All interested parties must verify accuracy and your solicitor must verify tenure/lease information, fixtures & fittings and, where the property has been extended/converted, planning/building regulation consents. All dimensions are approximate and quoted for guidance only as are floor plans which are not to scale and their accuracy cannot be confirmed. Reference to appliances and/or services does not imply that they are necessarily in working order or fit for the purpose.

"Our Service is Key"

2 Bedroom
Flat

Guide Price £230,000
Mimosa Close, Romford, RM3 8GU





Whilst every attempt has been made to ensure the accuracy of the floor plan contained here, measurements of doors, windows, rooms and any other items are approximate and no responsibility is taken for any error, omission, or mis-statement. This plan is for illustrative purposes only and should be used as such by any prospective purchaser. The services, systems and appliances shown have not been tested and no guarantee as to their operability or efficiency can be given.
Made with Metropix ©2021